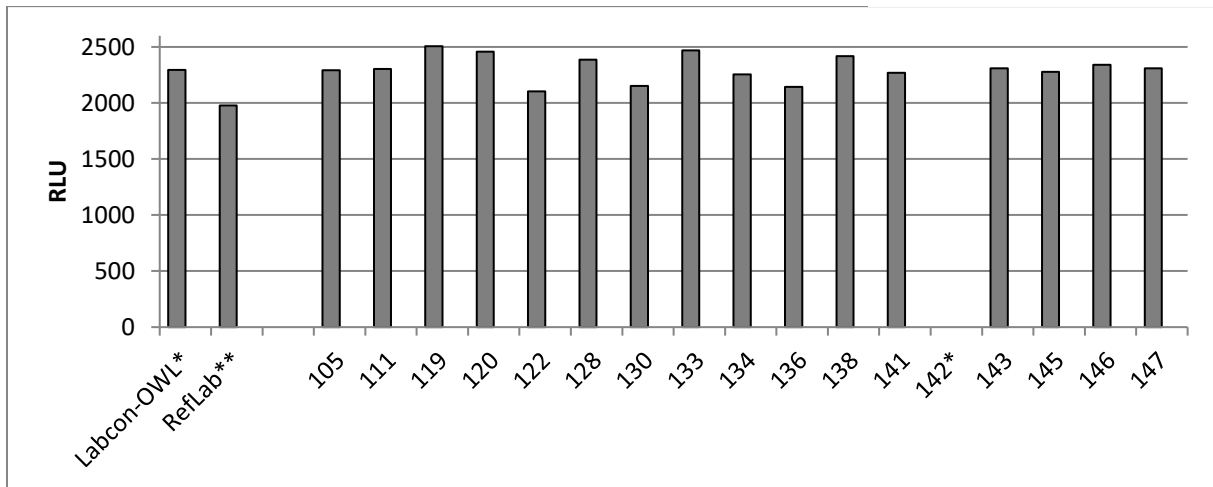


Overview EQA I/2024



Sample 2024-01: CT positive / NG positive



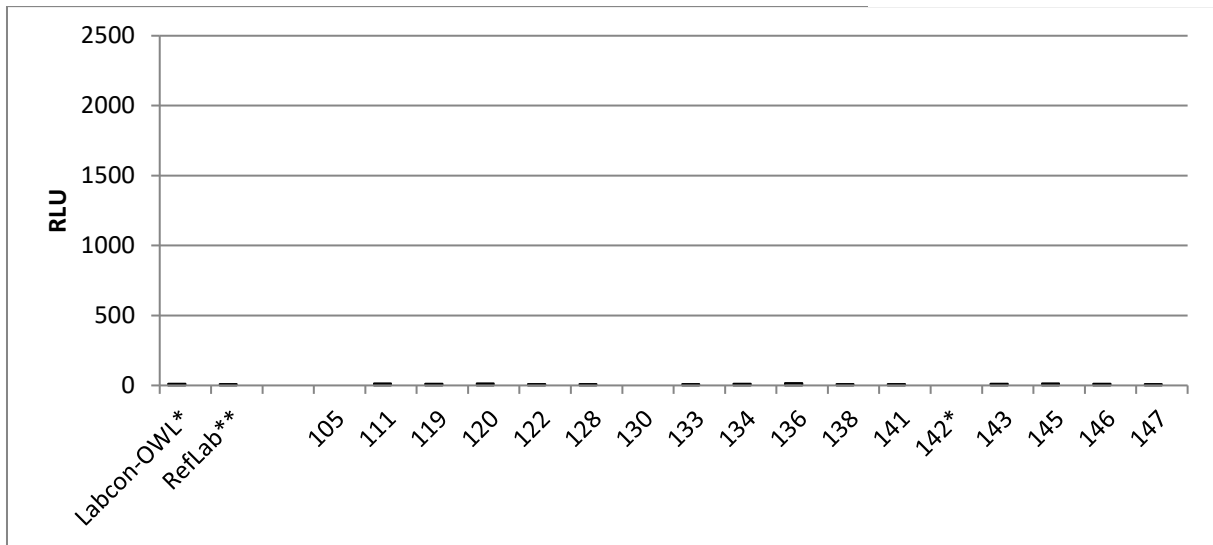
	RLU Panther
LABCON-OWL*	2295
RefLab**	1978
105	2291
111	2303
119	2507
120	2458
122	2105
128	2386
130	2153
133	2468
145	2254
136	2144
138	2418
141	2270
142[†]	
143	2308
145	2277
146	2340
147	2310

*RLU value constantly monitored over the entire testing phase of the external quality assessment by LABCON-OWL GmbH

**External Reference Laboratory in Germany

[†]Result for Aptima single test of CT only, not included in the diagram

Sample 2024-02: CT negative / NG negative



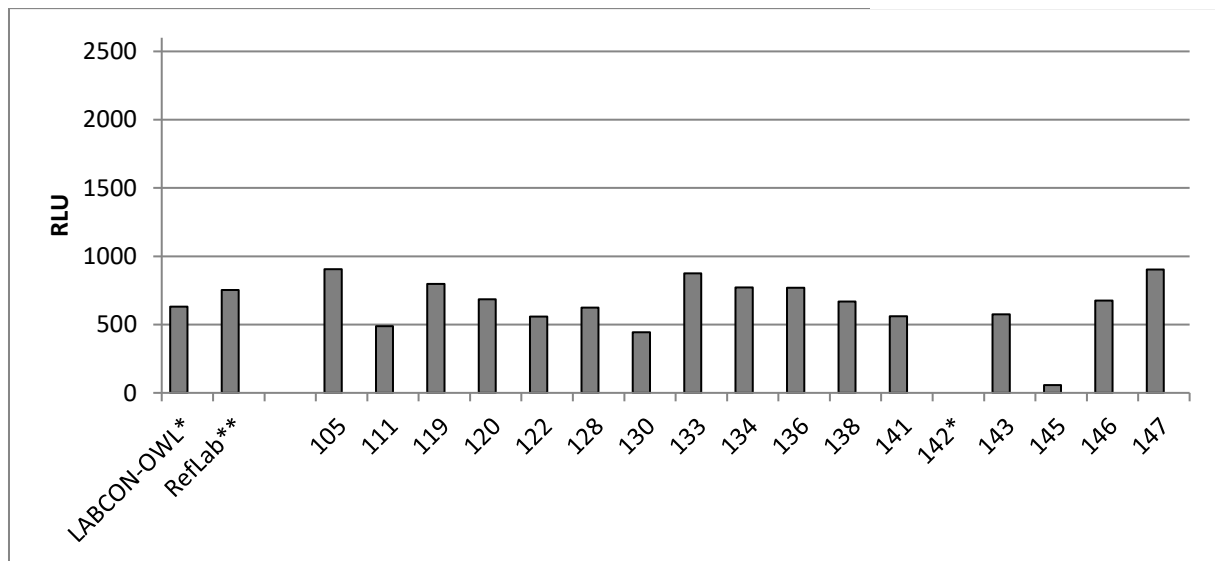
	RLU Panther
LABCON-OWL*	12
RefLab**	9
105	0
111	14
119	12
120	15
122	9
128	10
130	0
133	10
145	12
136	16
138	10
141	11
142[†]	11
143	12
145	14
146	12
147	11

*RLU value constantly monitored over the entire testing phase of the external quality assessment by LABCON-OWL

**External Reference Laboratory in Germany

†Result for Aptima single test of CT only, not included in the diagram

Sample 2024-03: CT positive / NG negative



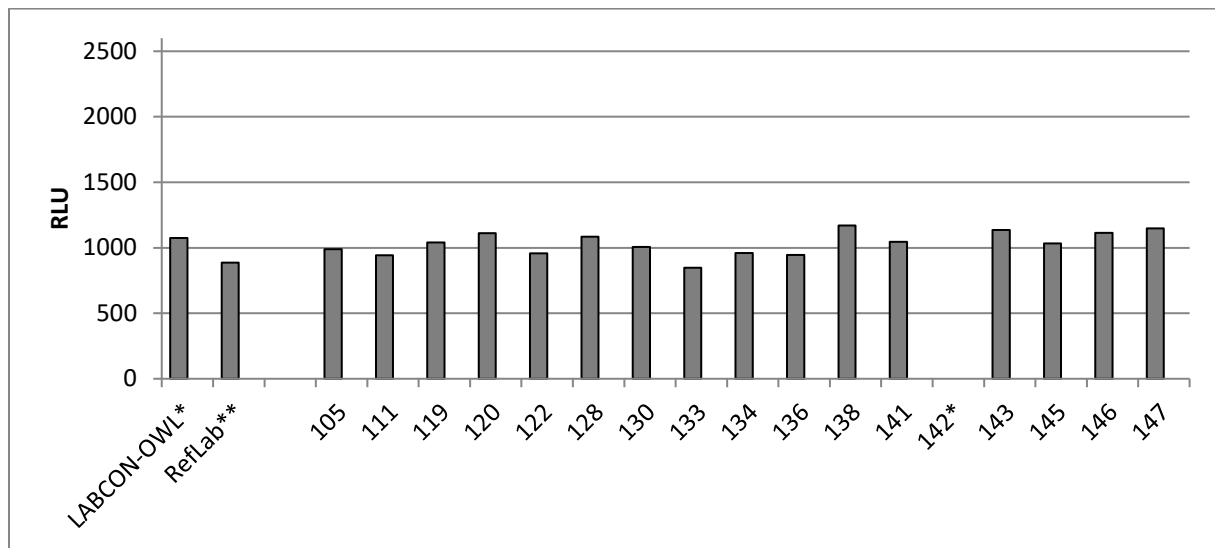
	RLU Panther
LABCON-OWL*	632
RefLab**	753
105	905
111	489
119	798
120	685
122	559
128	624
130	443
133	874
145	772
136	770
138	669
141	562
142 [†]	58
143	574
145	58
146	675
147	903

*RLU value constantly monitored over the entire testing phase of the external quality assessment by LABCON-OWL

**External Reference Laboratory in Germany

[†]Result for Aptima single test of CT only, not included in the diagram

Sample 2024-04: CT negative / NG positive



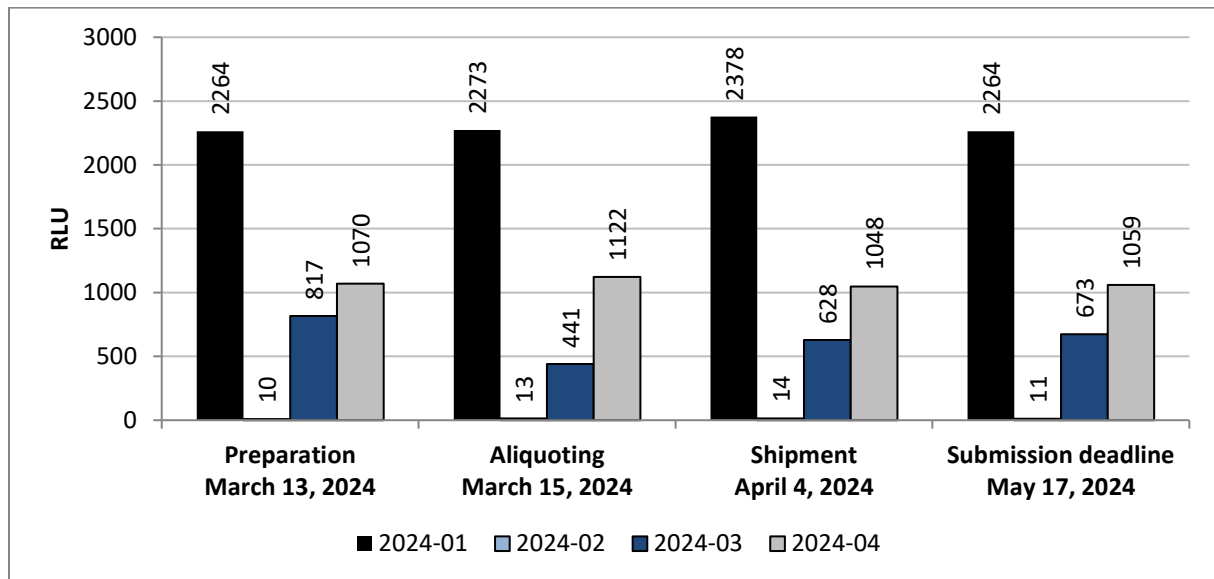
	RLU Panther
LABCON-OWL*	1074
RefLab**	886
105	988
111	942
119	1040
120	1112
122	958
128	1084
130	1007
133	848
145	960
136	945
138	1171
141	1046
142 [†]	1136
143	1032
145	1114
146	1149
147	

*RLU value constantly monitored over the entire testing phase of the external quality assessment by LABCON-OWL

**External Reference Laboratory in Germany

[†]Result for Aptima single test of CT only, not included in the diagram

Appendix: Stability of the samples over the period of the external quality assessment



RLU values determined over the period of the external quality assessment by LABCON-OWL

The target value of all samples was confirmed and monitored in a reference laboratory in Germany before distribution. During the testing period the samples were retested three times by LABCON-OWL. The data are illustrated above. This graph shows the course of signal change for all four panel members over a period of nine weeks (storage at room temperature).